

Corners to be Indexed

NW CORNER 8-105-43
NE CORNER 7-105-43
W1/4 CORNER 8-105-43
E1/4 CORNER 7-105-43

JAN 24 2022

Karen Brown

I hereby certify that this document and the data contained herein was prepared by me or under my direct supervision.

[Signature]

4/30/2021
Date

Daniel L. Bueltel

License No. 43844

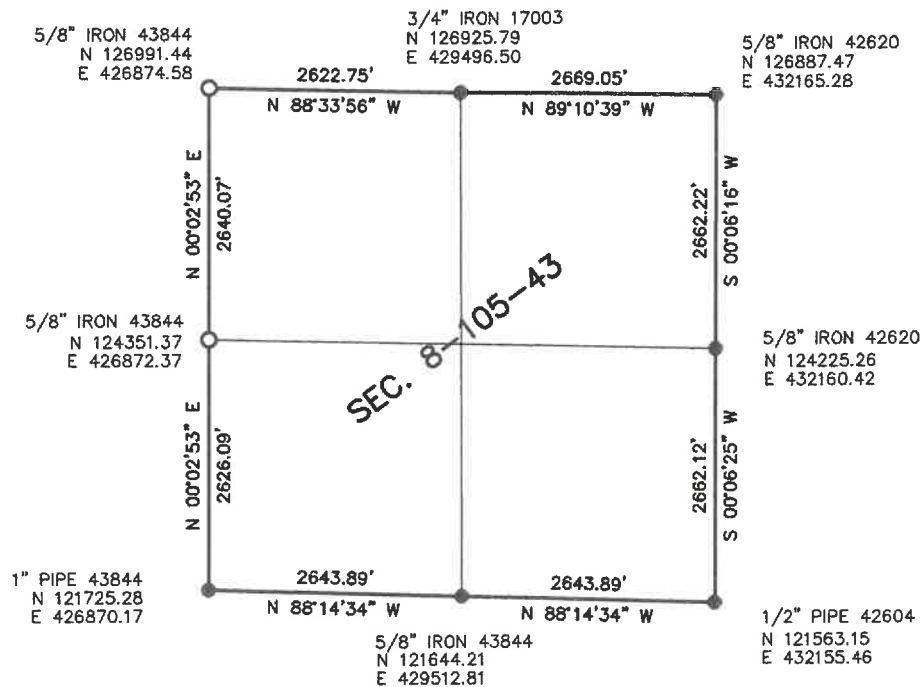
CERTIFICATE OF LOCATION OF GOVERNMENT CORNER

Land survey monuments situated in Section 8, Township 105, Range 43

STATE OF MINNESOTA, County of MURRAY



- FOUND MONUMENT
- SET MONUMENT



Murray County Coordinate System (1996)

STATEMENT OF EVIDENCE

NW CORNER 8-105-43 (NE 7-105-43)

On April 14, 2021, searched for corner and found old corner fence post at intersection of well established fence/occupation to north, south, east, and west. Set 5/8" iron with seal 43844 at corner fence post.

W1/4 CORNER 8-105-43 (E1/4 COR. 7-105-43)

On April 14, 2021, searched for corner and nothing. after reviewing old area photos, it has been a tilled for many years. approximately 1300 feet east is an old fence line. Projected fence line west and it is within approximately 7 feet of single proportionate. Set 5/8" iron with seal 43844 1.5 feet below ground, on line with said east fence line and on line between section corners.